

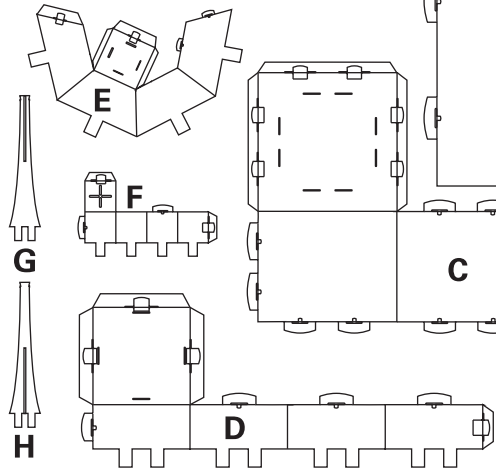
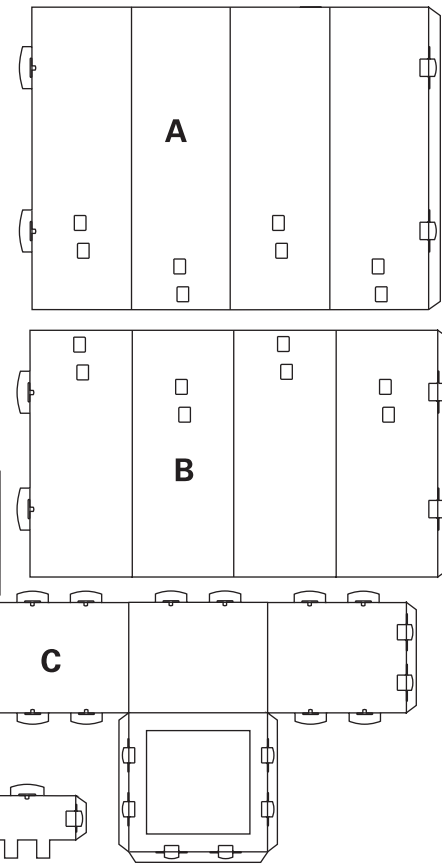
13761532 World Traveler Column Instructions

©2016 Oriental Trading Company, Inc.

OrientalTrading.com (800)-228-2269

COMPONENTS LIST

- QTY. 1 A) BASE BOX
- QTY. 1 B) BASE BOX
- QTY. 1 C) CLOCK BOX
- QTY. 1 D) MEDIUM BOX
- QTY. 1 E) TRIANGLE BOX
- QTY. 1 F) SMALL BOX
- QTY. 1 G) STEEPLE 1
- QTY. 1 H) STEEPLE 2

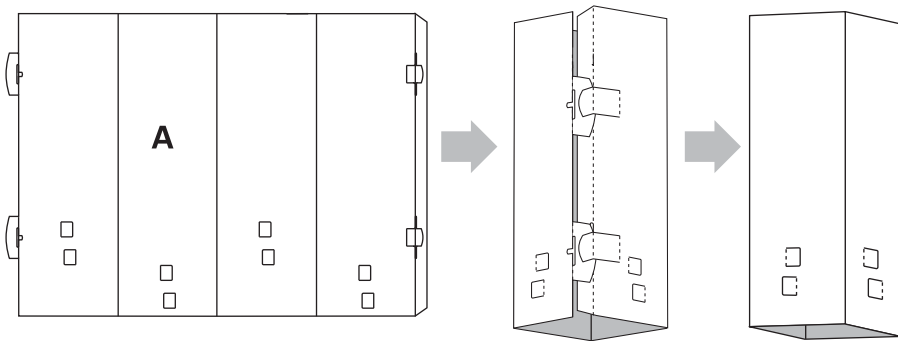


BEFORE YOU BEGIN ASSEMBLY:

- Check that all materials are included in your kit.
- Please read through the instructions before you begin assembly.
- Make sure that your work area is spacious enough to assemble the column.
- Assembly time should be about 30 minutes for two people.

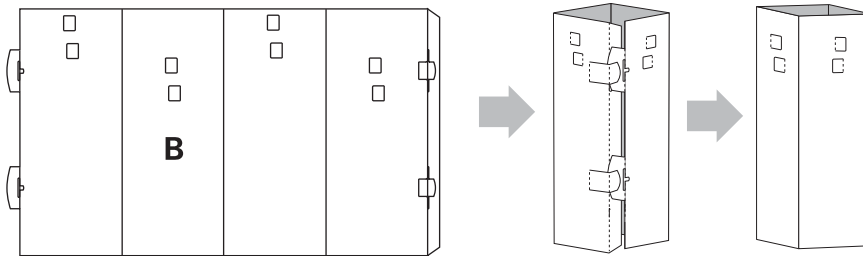
STEP 1:

Fold Piece A along the score lines to form a long box shape with the printed side facing out. Fasten the box shape securely by inserting all tabs into the slot openings.



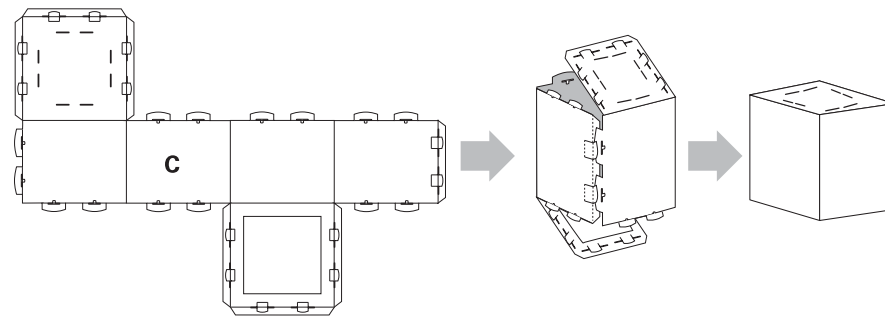
STEP 2:

Fold Piece B along the score lines to form a long box shape with the printed side facing out. Fasten the box shape securely by inserting all tabs into the slot openings.



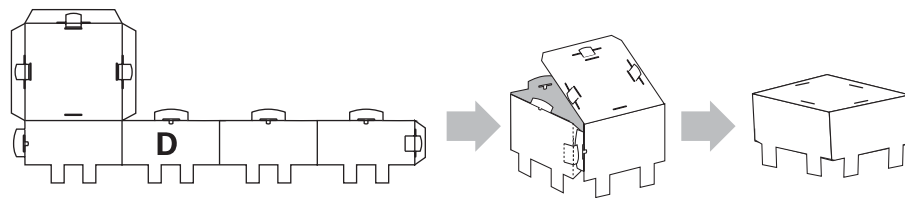
STEP 3:

Fold Piece C along the score lines to form a box shape with the printed side facing out. Fasten the box shape securely by inserting all tabs into the slot openings. Fasten the top and bottom of the box by inserting the tabs into the slot openings.



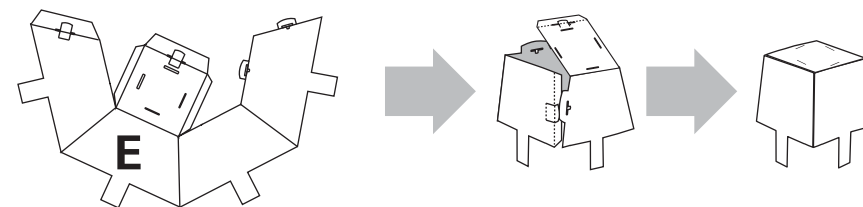
STEP 4:

Fold Piece D along the score lines to form a box shape with the printed side facing out. Fasten the box shape securely by inserting all tabs into the slot openings. Fasten the top of the box by inserting the tabs into the slot openings.



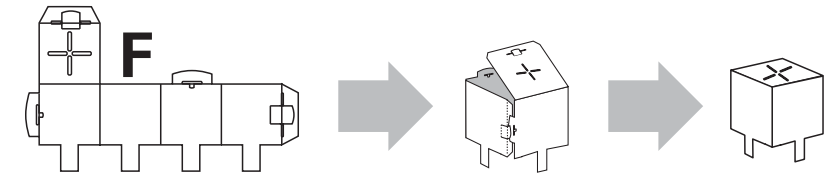
STEP 5:

Fold Piece E along the score lines to form a box shape with the printed side facing out. Fasten the box shape securely by inserting all tabs into the slot openings. Fasten the top of the box by inserting the tab into the slot opening.



STEP 6:

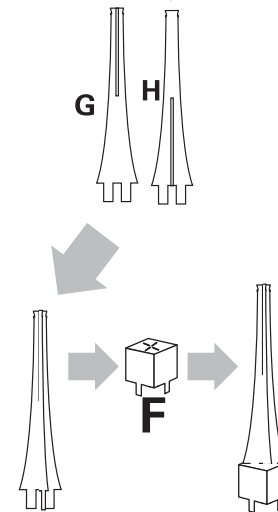
Fold Piece F along the score lines to form a box shape with the printed side facing out. Fasten the box shape securely by inserting the tab into the slot opening. Fasten the top of the box by inserting the tab into the slot opening.



STEP 7:

Slot Pieces G and H together with the printed sides facing out.

Insert Pieces G and H into the slots on top of Piece F.



STEP 8:

Insert Piece B into the bottom of Piece A. Lock the two pieces together by pressing in the square side tabs on all sides.

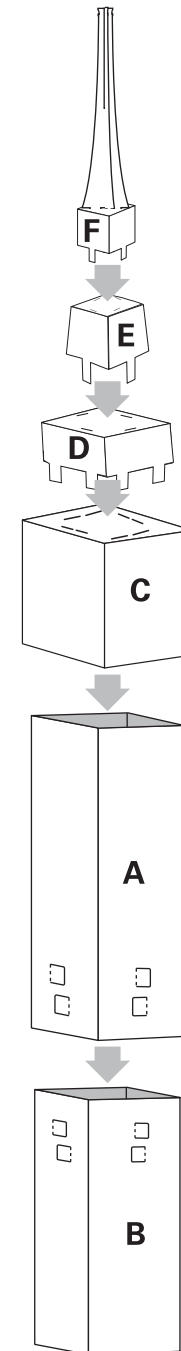
When assembling the pieces, be sure to align the folded seams of the posts.

Stack Piece C over the top of Piece A.

Stack Piece D on top of Piece C by inserting all eight of the bottom tabs on Piece D into the eight slots at the top of Piece C.

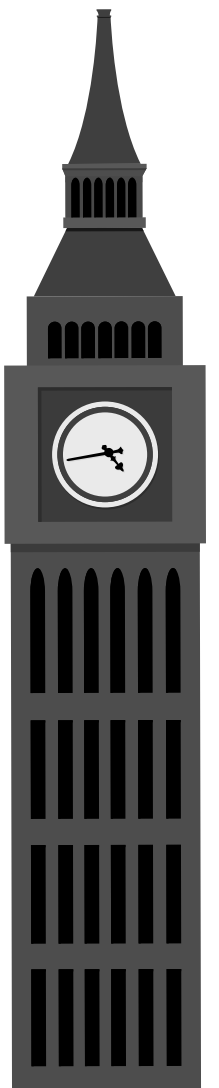
Stack Piece E on top of Piece D by inserting all four of the bottom tabs on Piece E into the four slots at the top of Piece D.

Stack Piece F on top of Piece E by inserting all four of the bottom tabs on Piece F into the four slots at the top of Piece E.



Your World Traveler Column is Finished!

Enjoy your new World Traveler Column! Use it as a display piece or as part of a larger scene.



WARNING!!!
THE COLUMN IS NOT CAPABLE OF SUSTAINING HEAVY WEIGHTS.